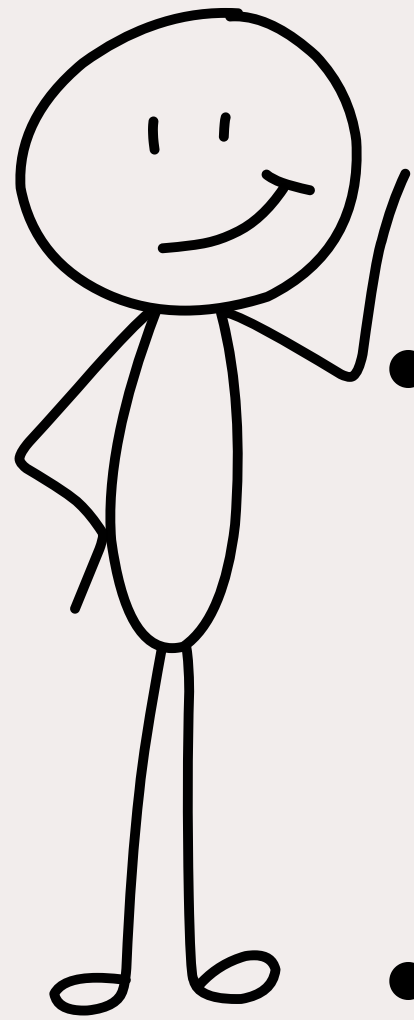


The Three Lights Puzzle

DEDUCTIVE REASONING

- You are standing outside a room with three light switches on the wall. One of them controls a light bulb inside the room; the other two do nothing. The door is closed, and you cannot see inside the room.
- You can manipulate the switches as much as you want, but you may enter the room only once. Once inside, you will see the light bulb (which is either on, off, or warm).
- How can you determine which switch controls the bulb?



The Three Lights Puzzle

SOLUTION

- Turn on Switch 1 and leave it on for 5 minutes.
- Turn off Switch 1 and turn on Switch 2.
- Leave Switch 3 off, then enter the room.

Inside the room:

- Bulb is ON → Switch 2 controls it.
- Bulb is OFF but WARM → Switch 1 controls it.
- Bulb is OFF and COLD → Switch 3 controls it.

